

Short Report



Aqua Aurelia Suitehotel & Doormanhouse | Aqua Aurelia Suitehotel & Doormanhouse

Aqua Aurelia Suitehotel & Doormanhouse

Vincentstraße 1
76530 Baden-Baden

Tel: +49 7221 18330
Fax: +49 7221 183318

info@aquaaurelia.de
www.aquaaurelia.de

Welcome!

On the former spa meadow, the Aqua Aurelia Suitenhotel with its 46 suites continues the traditions of the spa town: Designed by the architect couple Rainer and Regina Bender and continued as a family business by their joint daughter Katharina Bender, the 4* Superior Hotel has been offering the appropriate comfort in a family atmosphere for more than 10 years. The junior, superior, deluxe and grand suites are characterized by an open living concept and timeless design. Each suite can be individually air-conditioned. The modern solar thermal system covers 70% of the hot water consumption in the entire hotel and, together with the modern building control system, reduces energy consumption many times over.

TEST RESULT

for

Aqua Aurelia Suitehotel & Doormanhouse

76530 Baden-Baden, Certificate-ID: PA-13461-2023



This offer was classified according to
the criteria of the nationwide label

»Tourism for All«

and, in the period from

May 2023 – April 2026

is entitled to use the label

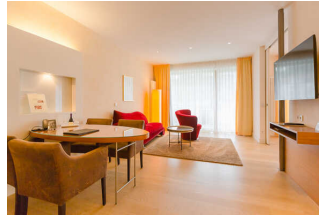
»Accessibility Information«

in accordance with the contract.



Aqua Aurelia Suitehotel & Doormanhouse

Aqua Aurelia Suitehotel &
Doormanhouse



Aqua Aurelia Suitehotel & Doormanhouse

Aqua Aurelia Suitehotel &
Doormanhouse



Aqua Aurelia Suitehotel & Doormanhouse

Aqua Aurelia Suitehotel &
Doormanhouse



Aqua Aurelia Suitehotel & Doormanhouse

Aqua Aurelia Suitehotel &
Doormanhouse



Aqua Aurelia Suitehotel & Doormanhouse

©Michaela Mack

Information for people with walking difficulties and wheelchair users

Some **information on accessibility** are listed below. For detailed information please see the evaluation report.

- There are no marked parking spaces for people with disabilities. However, a parking space can be reserved in the underground garage.
- The bus stop "Caracalla Therme" is 40 m away.
- The path in front of the entrance has longitudinal and transverse slopes of about 7%.
- The building is accessible without steps.
- All evaluated rooms and facilities available to the guests are accessible at ground level or via elevators.
- The elevator cabins measure 110 cm x 140 cm. The elevator doors are 90 cm wide.
- All evaluated passageways/doors available to the guests are at least 69 cm wide or alternatives are available.
- The reception desk is 115 cm high.
- In the restaurant the tables are not wheelchair compatible (2 cm high base).

Room 203 (ground floor, double room)

- The manoeuvring spaces are:
in front of essential furnishings (e.g. wardrobes) 162 cm x 146 cm;
to the left of the bed 170 cm x 320 cm; to the right of the bed 140 cm x 320 cm.
- The bed is 60 cm high.
- The door threshold to the terrace is 7 cm high.
- The manoeuvring spaces in the bathroom are:
in front of the sink and the WC 155 cm x 100 cm;
to the left of the WC 26 cm x 55 cm; to the right of the WC 83 cm x 55 cm.
- The sinks clearance is limited by claddings, cupboards or similar items. The mirror can be viewed while sitting or standing.
- The shower is accessible via a threshold of 7 cm and measures 88 cm x 88 cm.
- There are no grab rails at the toilet or in the shower and no shower seat.

Room 101 (garden floor, double room)

- The manoeuvring spaces are:
in front of essential furnishings (e.g. wardrobes) 174 cm x 160 cm;
to the left of the bed 174 cm x 160 cm; to the right of the bed 230 cm x 204 cm.
- The bed is 60 cm high.
- The door threshold to the terrace is 7 cm high.
- The manoeuvring spaces in the bathroom are:
in front of the sink 170 cm x 145 cm; in front of the WC 120 cm x 170 cm;
to the left of the WC 33 cm x 55 cm; to the right of the WC 38 cm x 55 cm.

- The sinks clearance is limited by claddings, cupboards or similar items. The mirror can be viewed while sitting or standing.
- The shower is accessible without thresholds, the passage is 67 cm wide. The oval shower surface has a diameter of 106 cm.
- There are no grab rails on the WC or in the shower and no shower seat.

Public WC for people with disabilities

- The manoeuvring spaces are:
in front of the sink and the WC 166 cm x 145 cm;
to the left of the WC 31 cm x 71 cm; to the right of the WC 101 cm x 71 cm.
- There are fold-up grab rails to the left and right of the WC.
- The washbasin is wheelchair compatible.
- There is an alarm trigger.

Information for people with hearing impairments and deaf people

Some **information on accessibility** are listed below. For detailed information please see the evaluation report.

- There is no clearly visible alarm.
- There is no audio induction loop system.
- An outgoing emergency call in the elevators is confirmed audibly.
- In the restaurant there are tables with bright and glare-free lighting, on which there are no lamps standing or hanging that interfere with the field of vision or eye contact. There is no seating area with low background noises (e.g. corner seating, separate room).

Room 101 and 203 (double room)

- There is at least one electrical outlet available near the bed.
- The ringing or knocking on the door is not indicated by a flashing signal which can be detected in all rooms.
- WiFi is offered.

Information for visually impaired and blind people

Some **information on accessibility** are listed below. For detailed information please see the evaluation report.

- Assistance dogs are allowed in relevant areas/rooms.
- All evaluated and usable areas for the guest are well illuminated, i.e. bright and glare-free.
- The signage is designed in clearly legible and contrasting font.
- An outgoing emergency call in the elevators is confirmed audibly. The break position is not announced by spoken commands.
- Steps are not visually rich in contrast. Stairs have at least a handrail on one side.
- Information is not available in Braille or prismatic font.

Information for guests with cognitive impairments

Some **information on accessibility** are listed below. For detailed information please see the evaluation report.

- The name or logo of the establishment is clearly recognizable from the outside.
- Information for orientation is partly available with pictograms.
- There is no information in easy language.

Information on the "Tourism for All" labeling system

All establishments and locations certified with the label "Tourism for All" meet the following quality criteria:

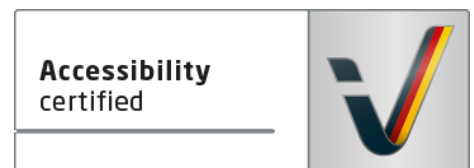
- Data and information on accessibility are collected and checked on site by **external, specially trained evaluators**. The method is not based on self-assessments.
- Data on accessibility is available **in detail** and can be viewed by the guests.
- At least one staff member has successfully passed a **training** on "**Accessibility as a comfort and quality feature**".

The labeling – explanation of the logos and pictograms

The label "**Information about Accessibility**" indicates that detailed and verified information on accessibility is available for all groups of people.



The label "**Accessibility certified**" is based on "Information about Accessibility". It means that the quality criteria defined for specific groups of people are met partially or completely.



The label "**Accessibility certified**" is available in two requirement levels:

"Accessibility certified: partially accessible".

The quality criteria are partially fulfilled for the pictured group of people, i.e. the establishment/location is partially accessible for wheelchair users. The "i" in the pictogram indicates that it is recommended to read again carefully whether the offer meets all (your oder the guest's) individual requirements.



"Accessibility certified: accessible".

The quality criteria are fulfilled for the pictured group of people, i.e. the establishment/location is accessible for wheelchair users.



There are defined quality criteria for **seven groups of people** and a **specific pictogram** for each group.

People with walking disabilities



Wheelchair users



People with hearing impairment



Deaf people



People with visual impairments



Blind people



People with cognitive impairments

